
IP Power SE

Centralized Monitoring And Unified Management Software

User's Manual

Content

1. Introduction.....	4
1.1 Brief Introduction.....	4
1.2 Function.....	4
1.3 System Request.....	5
1.4 Operating Systems Supported.....	5
2. Install, Start, Exit and Uninstall the Software.....	5
2.1 Installation.....	6
2.2 Start.....	6
2.3 Exit.....	8
3. User's Main Interface.....	8
3.1 Menu.....	8
3.1.1 "System" Menu.....	8
3.1.2 "Device Management" Menu.....	9
3.1.3 "View" Menu.....	9
3.1.4 "Control" Menu.....	9
3.1.5 "Record" Menu.....	9
3.1.6 "Help" Menu.....	9
3.2 Toolbar.....	10
3.3 Navigator Tree.....	10
3.4 Main Window.....	10
3.5 Warning.....	10
4. Device Monitoring.....	10
4.1 Add Area.....	11
4.2 Add Device.....	12
5. "System Setting" Menu.....	17
5.1 System Setting.....	17
5.1.1 Basic Setting.....	17
5.1.2 Beep-Pager.....	18
5.1.3 SMS.....	19
5.1.4 E-mail.....	20
5.1.5 Warning Definition.....	21
5.2 Crisis Management.....	22
5.2.1 Client Side Crisis Management.....	22
5.2.2 Server Crisis Management.....	23
5.3 Data Backup.....	24
5.4 Recover Data.....	24
5.5 Log out.....	25
5.6 Modify Password.....	25
5.7 Exit.....	25
6. "Device Management" Menu.....	25
7. "View" Menu.....	27
8. "Control" Menu.....	27

8.1 Control/Test.....	27
8.2 Turn on/Turn off.....	27
9. “Record” Menu.....	27
10. “Help” Menu.....	30
10.1 information and version	27
10.2 Help for today.....	27
10.3 System Help.....	27

1. Introduction

1.1 Brief Introduction

IP Power SE is system software for UPS network monitoring, which can monitor multiple UPS at the same time in network. When utility power is normal, it will clearly display the real-time status of the UPS input & output voltage/frequency/load/temperature/battery capacity etc by data or graphic. It not only help users to monitor the quality of power supply, but also can remotely control UPS by network at the same time, so users could more effectively to manage the power without space limitation. When utility power interrupted or UPS battery low, IP Power SE will achieve monitoring function without human control, it not only can precisely achieve automatic safe file and system shutdown functions, but also can add multi-direction transmit function of automatic alarm, including sound alarm, SMS/Email etc. So users no need to worry about the power interruption which may lead to the loss of system or files, and deal with it immediately. At the same time, system can also record the UPS running history events, history data and logs.

In addition, before users login the computer, IP Power SE will automatically run the monitoring program to reach unmanned control, automatically monitor & manage UPS. It also provides multi-language and allows users all over the world to choose their familiar languages.

In today's rapidly growing popularity of the Internet, regardless of personal PC or server, both have already been into 24 hours send-receive message time, so power management without human control has become the necessary for UPS equipment, and a complete IP Power SE system will become the best partner for Smart UPS.

1.2 Function

It can realize centralized remote monitoring for UPS real-time status with 7 kinds of alarms. It clearly displays real-time status of UPS voltage/ frequency/load/battery and other information to help users understand current quality of power supply by data and graph.

- Centralized monitoring equipment, such as single-phase UPS, three-phase UPS, temperature and humidity;
- Automatically detect the working status of UPS utility power, battery, inverter, bypass, self-test, etc;
- Can pop up the alarm message box then inform power interruption situation to the user and administrator;
- Can pop up alarm message box then inform the information of UPS running change to the users and administrators;
- Available to inform the users & administrators the power failure by multimedia voice;
- Available to notify the user & administrator the UPS running change information by multimedia voice;

-
- Available to send NT broadcast message to every windows computer on which have enable NT message broadcast service in LAN;
 - Available to send Email alarm to the designated Email addresses automatically;
 - Available to send alarm information to designated beepers by Modem automatically;
 - Available to send alarm SMS through GSM Modem to designated phones automatically;
 - Record all history events of the UPS running status and all the history data of parameters, provide inquiry anytime and power issue analysis. Users and administrator can master the power supply situation and UPS running trend for a reasonable plan of the power usage strategy and to avoid power crisis;
 - By running the system background service, the program begins before the users login the system, which can automatically monitor and manage UPS without staff intervention;
 - Excellent, reliable and stable performance after strictly test;
 - Friendly user interface, it is easy to install and use;
 - Support multi-user management and monitoring platform. Users with different authorization can be set through “Advanced User”.

1.3 System Request

MS-Windows

2000 or above operating system

30M free disk space

64M or above EMS memory

17' monitor

1.4 Operating Systems Supported

MS-Windows NT

MS-Windows 2000

MS-Windows XP

MS-Windows 2003

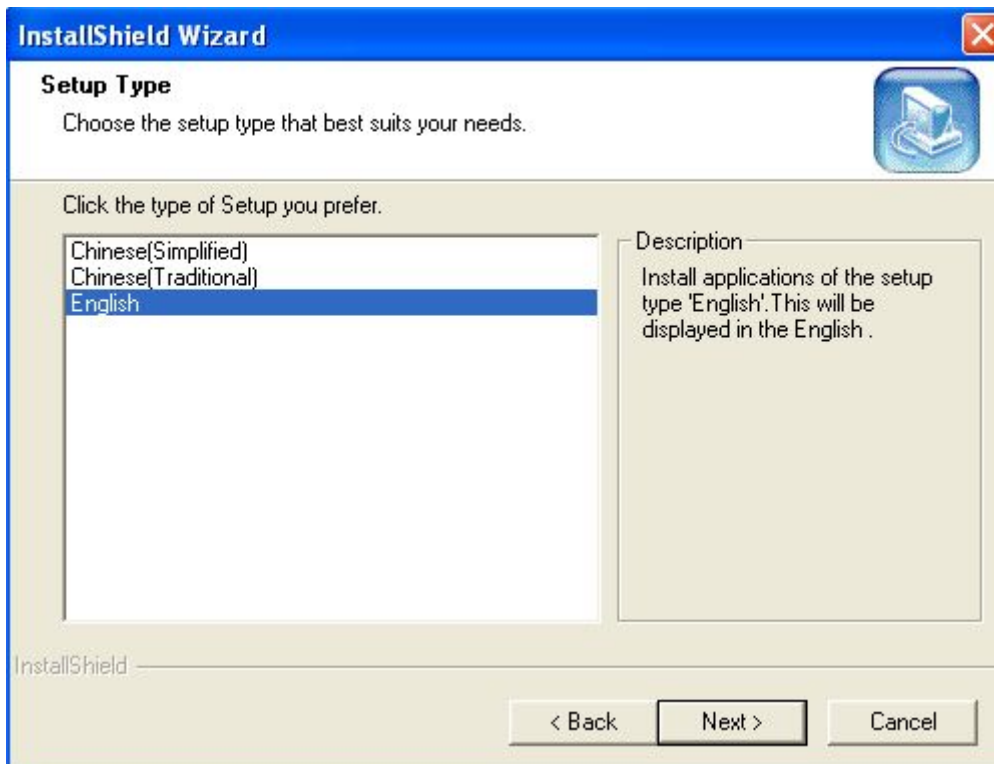
MS-Windows 7

MS-Windows 2008

2. Install, Start, Exit and Uninstall the Software

2.1 Installation

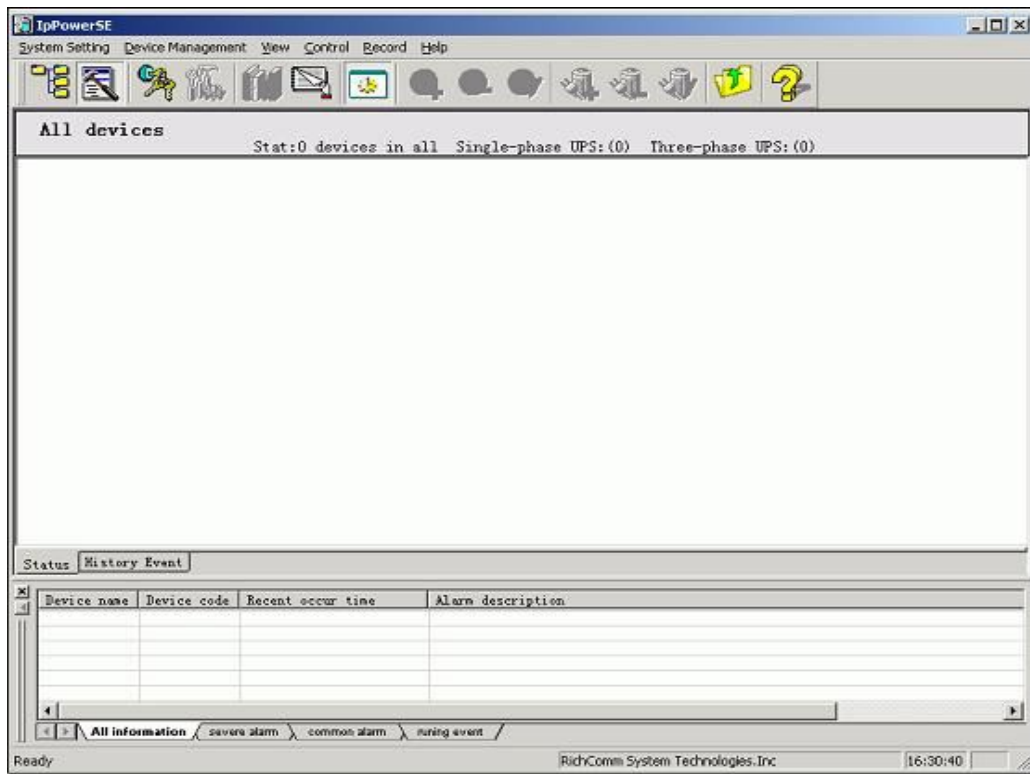
Insert the IP Power SE install CD into the CD-ROM and the program will run automatically to guide you through the installation. Press “Install Product” button on the screen and IP Power SE will begin to decompress and install. During the installation, you just need to simply choose the install directory and type.



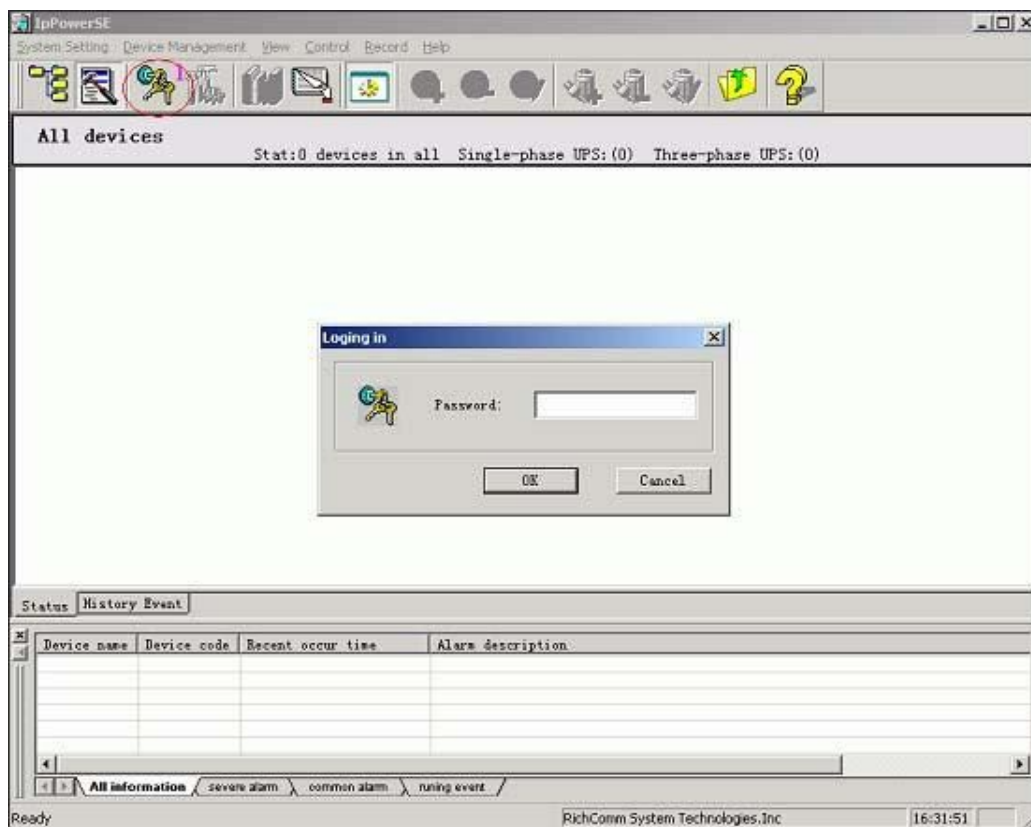
2.2 Start

To start the user interface of the IP Power SE software

The program will inquire you if you want to start the IP Power SE immediately after the installation. You may also start the IP Power SE status interface through “Start”—“Program”—“IP Power SE”. It defaults to be authorized for device checking without the rights for setting up.



For the first installation please press the shortcut button marked “1” (picture of key) in the chart below to login before you are authorized to add and modify any device. IP Power SE defaults to have vacant password.

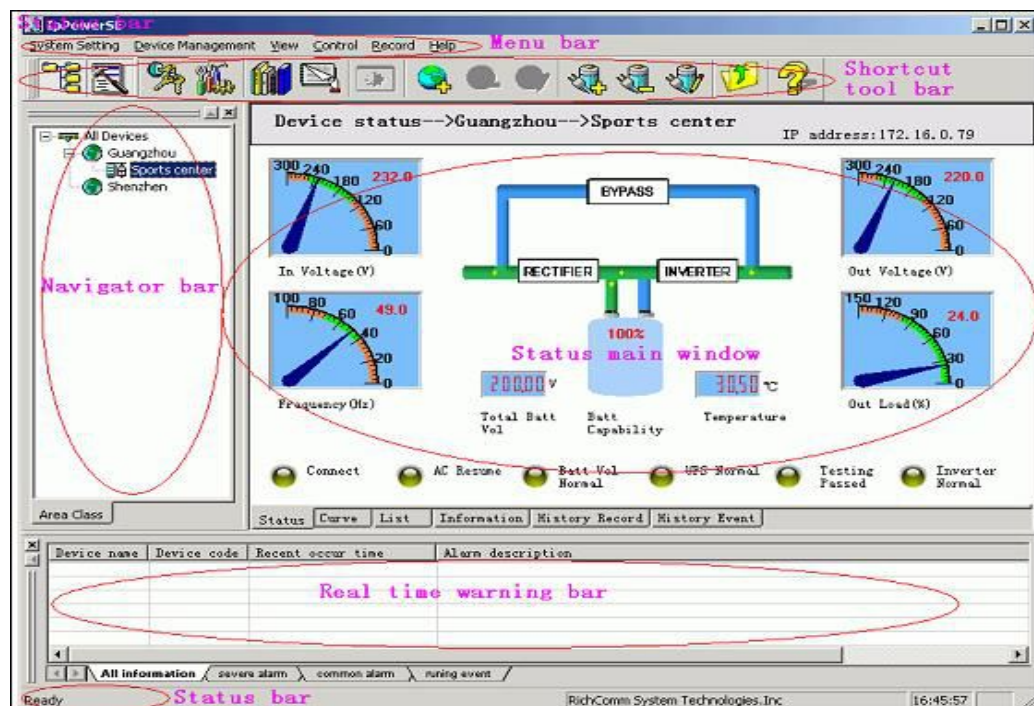


2.3 Exit

Press the “Close” button in the top right corner of the window is to exit UI, while the service is not quitted. For logging out of the service the customer may press the icon of tray in the lower right corner of the system. Choose “Exit” in the menu to log out IP Power SE program.

3. User’s Main Interface

IP Power SE user’s main interface includes 6 zones, including Menu, Tool, Navigator, Main Window, Information and Status, as below:



3.1 Menu

Menu lists all the functions of IP Power SE software, including systems, view, manage, control, record and help.

3.1.1 “System Setting” Menu

System setting menu is as below, including 8 options as System Setting, Client Crisis Processing, Server Crisis Processing, Copy for Data, Revert Data, Logout, Modify Password and Exit.



3.1.2 “Device Management” Menu

Device management Menu is as below, including 6 options: Add Device, Modify Device, Delete Device, Add Area, Modify Area and Delete Area.



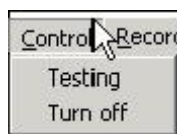
3.1.3 “View” Menu

“View” menu is as below:



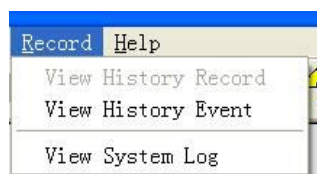
3.1.4 “Control” Menu

Two options included in the control menu: Test and Turn off.



3.1.5 “Record” Menu

“Record” Menu includes 3 options as below: History Record, History Event and System Log.



3.1.6 “Help” Menu

“Help” Menu includes 4 options as below: “About IP Power SE”, “Tips for today”, “System help” and “View and renew”.



3.2 Toolbar

Toolbar lists the shortcut buttons in IP Power SE, including Navigator, Information, Login, System Configuration, History Event, History Record, Add Area, Delete Area, Modify Area, Add Device, Delete Device, Modify Device, Superior and Help.



3.3 Navigator Tree

Promptly inquiry and display device.

3.4 Main Window

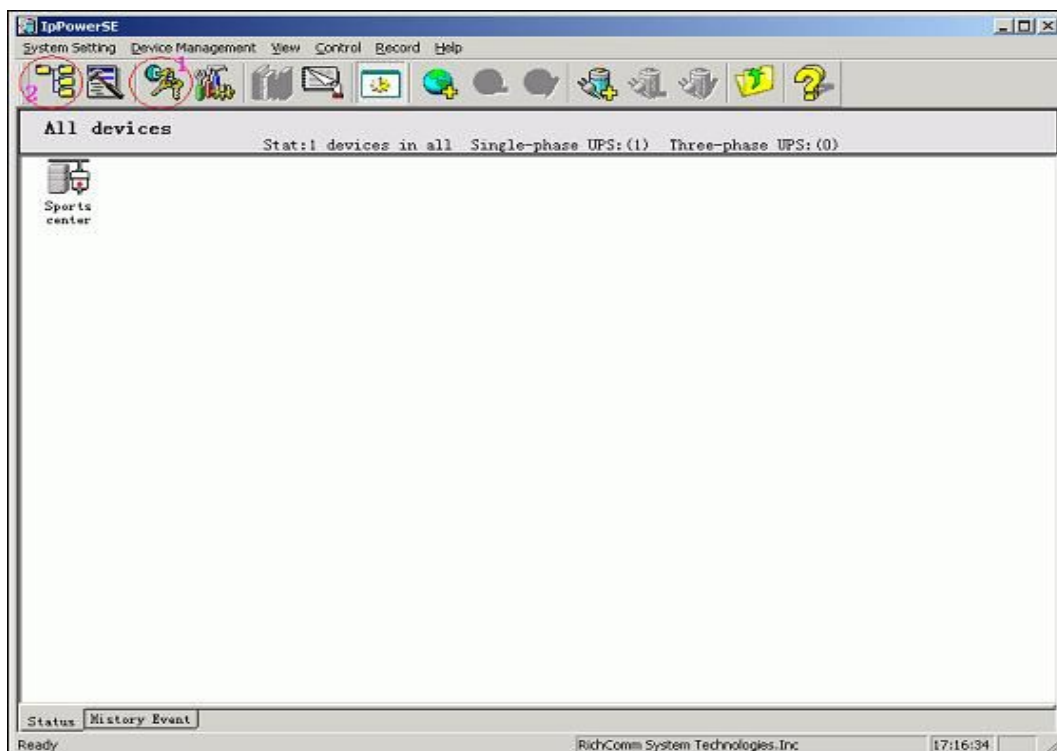
Display the running status of the selected device.

3.5 Warning Bar

To display the device that receives alarm. Corresponding device alarm will be auto cancelled in the Warning Bar after device alarm cancelled.

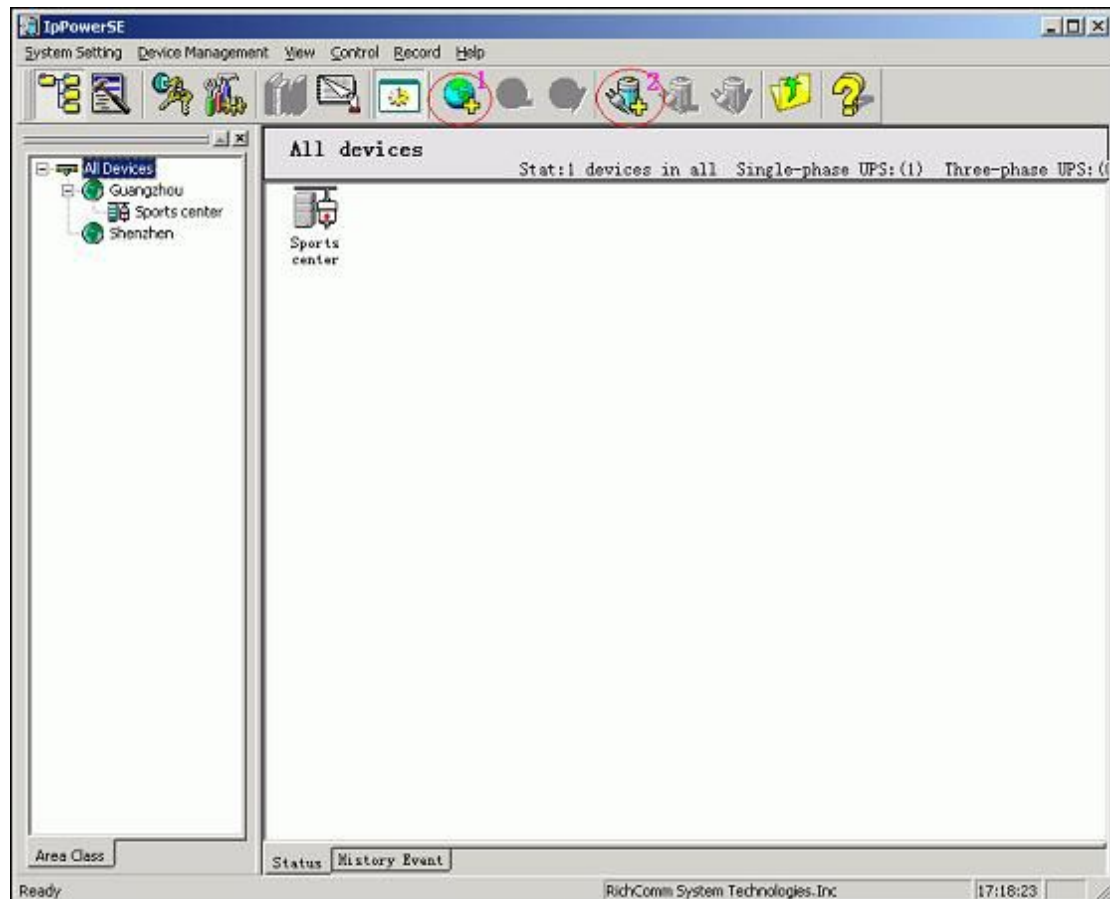
4. Device Monitoring

In the following there will be a guide for monitoring a device using IP Power SE software. If it is newly installed, after user starts the software and successfully login, user's main interface will be as below:



4.1 Add Area

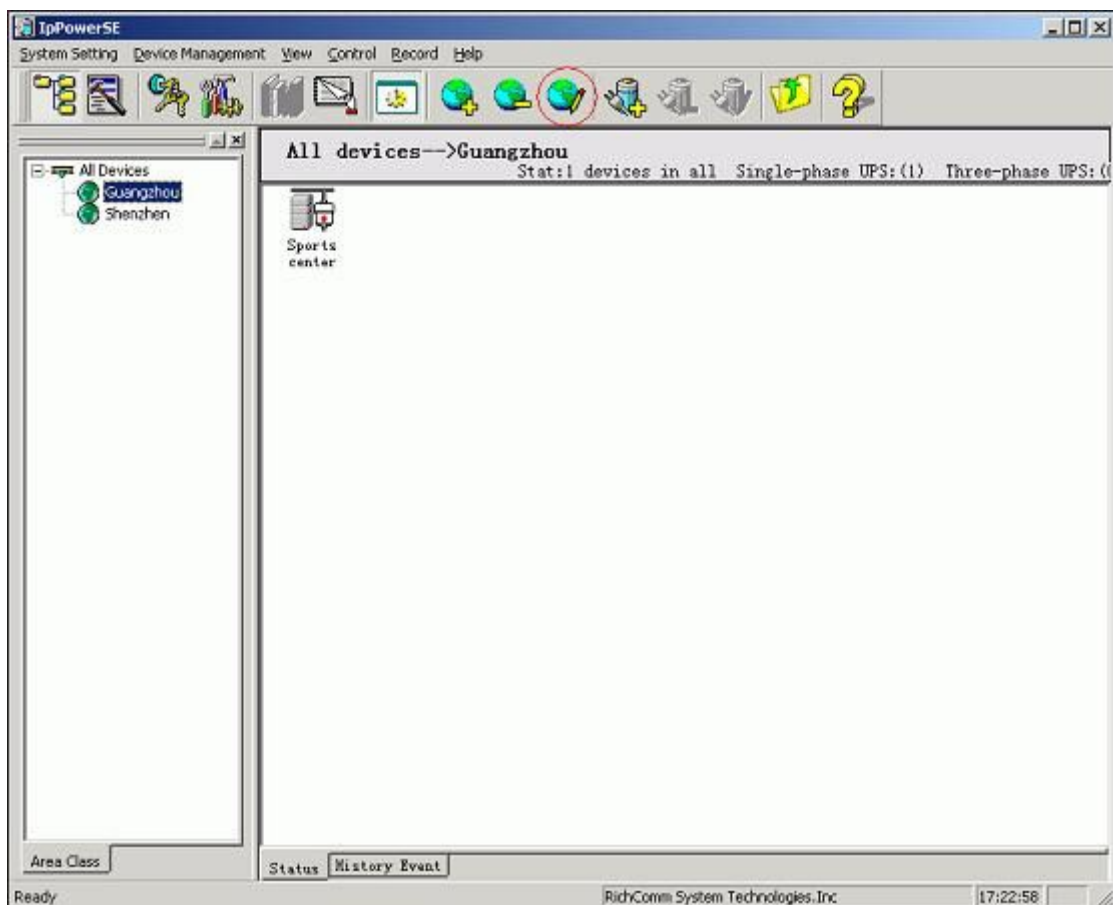
Press the shortcut button marked “1” in the above page. Enter the management page. If user hasn’t logged in IP Power SE, only the “View” function can be active without management, configuration and control functions. Press the button marked “2” to display the Navigator Tree. Interface is shown as below:



Press the button marked “1” shown in the above page to divide the area. If there is few devices or no need to divide area, please press button marked “2” to add device directly. Add Area is shown as below:



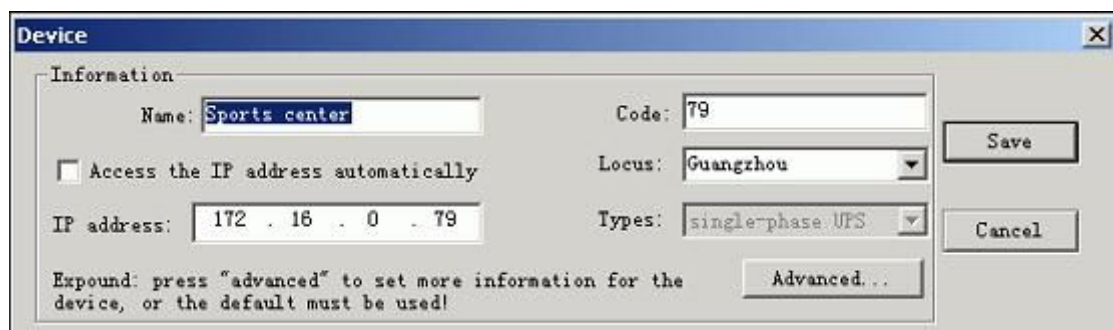
Input “Area Name” and “Remark” and then press the “Add” button below. Area add will be finished as below:



For modifying the area name or remark, select the area to be modified in the navigator and press “Modify Area”.

4.2 Add Device

Select the navigator, press “Add Device” in the toolbar and add the device to be monitored. As below:



Input device “Name”, “Number” and “IP Address” and then select the type for the device to be monitored.

Device type must be accord with SNMP card. For adding more information, please press “Advance” to enter the advanced configuration page.

Device [X]

Information

Name: Sports center Code: 79

☐ Access the IP address automatically Locus: Guangzhou

IP address: 172 . 16 . 0 . 79 Types: single-phase UPS

Expound: press "advanced" to set more information for the device, or the default must be used! **Advanced...**

Interval for saving the history data: 10 minutes Request data Every 20 secs

Remaining time for discharge less than 20 % Battery 2 hour:

COM PORT COM: 7001

Dispark: N Verify code: RICHCOMM

MAC address: 00-AA-5A-B0-00-79 FF-FF-FF-FF-FF-FF

Remark:

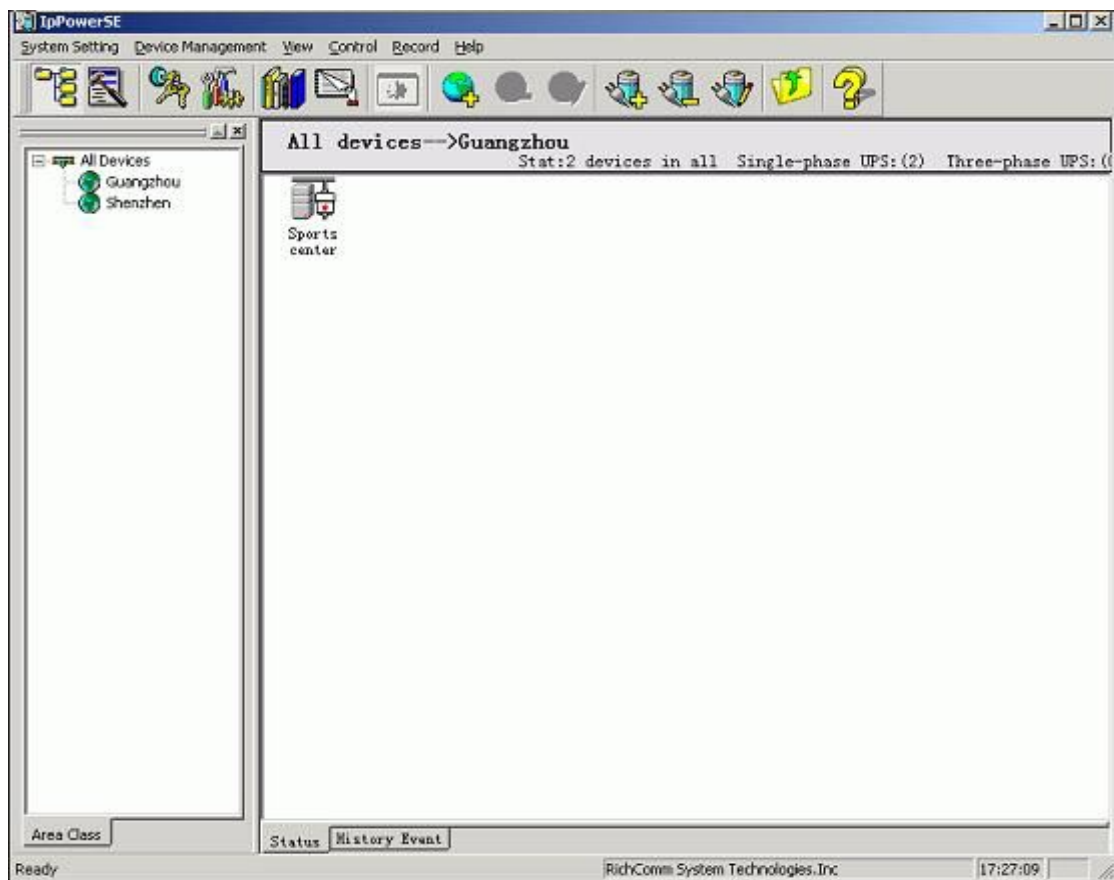
Save Cancel

“Interval for history data saving” is for setting the time interval for recording UPS history data. For example, if you set the time to be 20 minutes, IP Power SE will record the running data every 20 minutes.

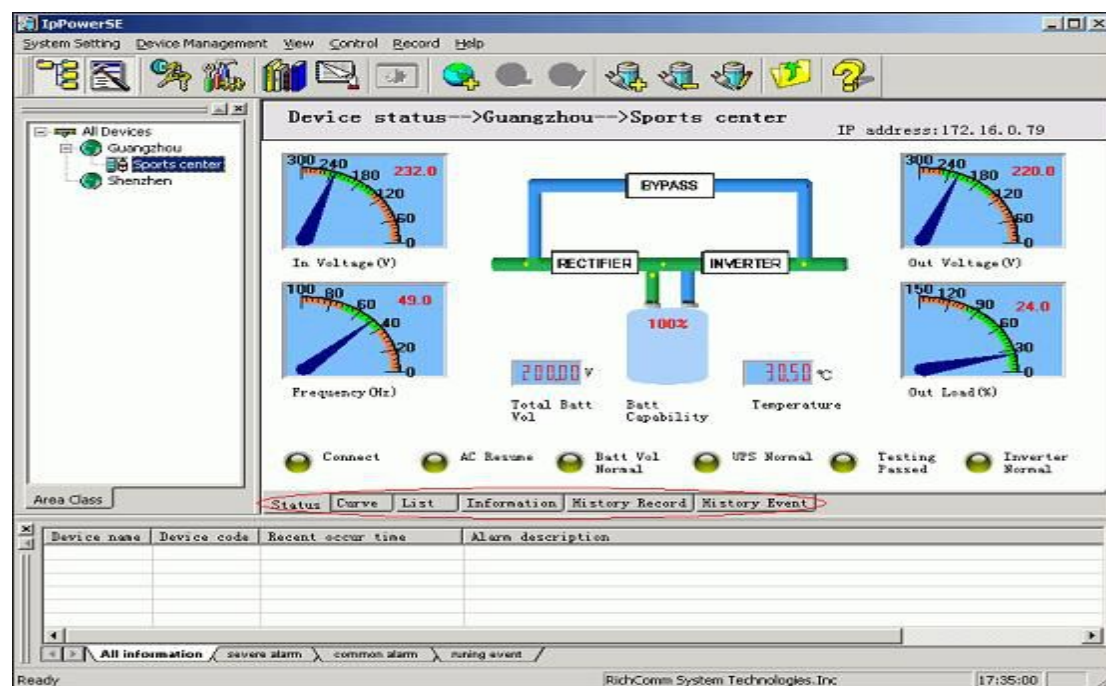
“Dispark” default is “Y” status, if you choose “N”, the status will not be displayed in the Navigator Bar, but only in the Area Status. “Verify code” is used for communication code between device and SNMP card. Its default is “RICHCOMM”. Verify Code should be same as network adapter. If they are not consistent, IP Power SE will pop out warning box.

[illegible]

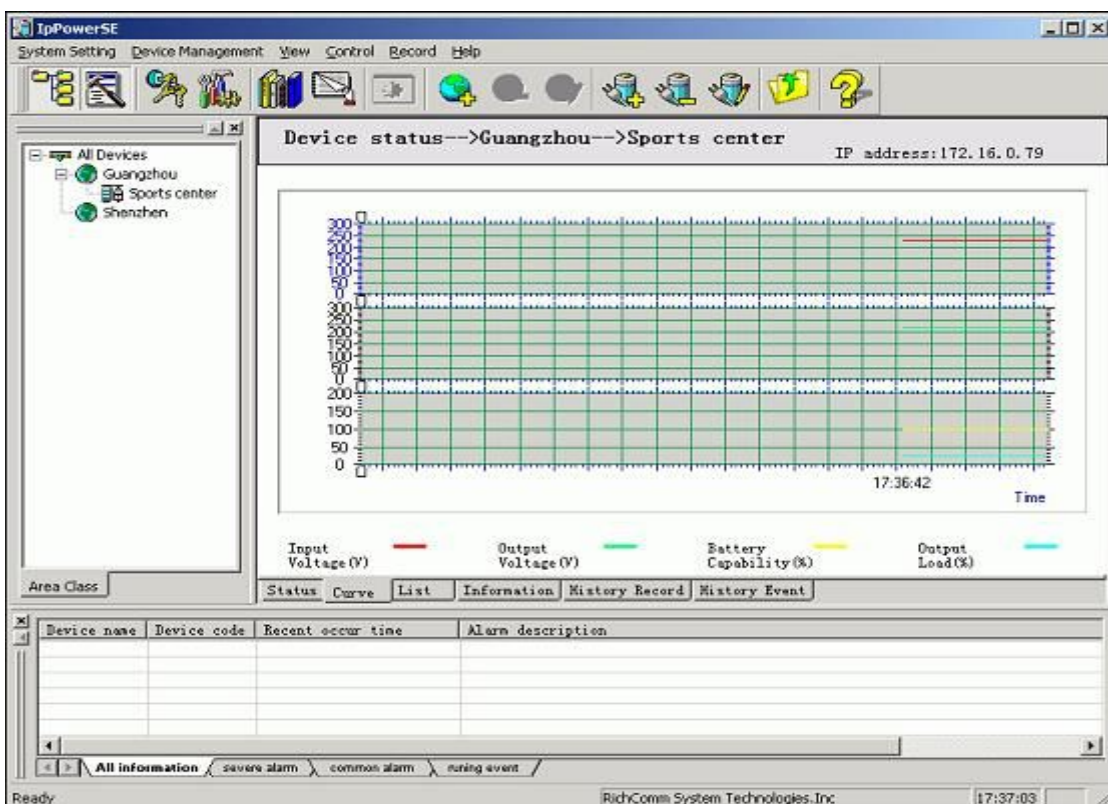
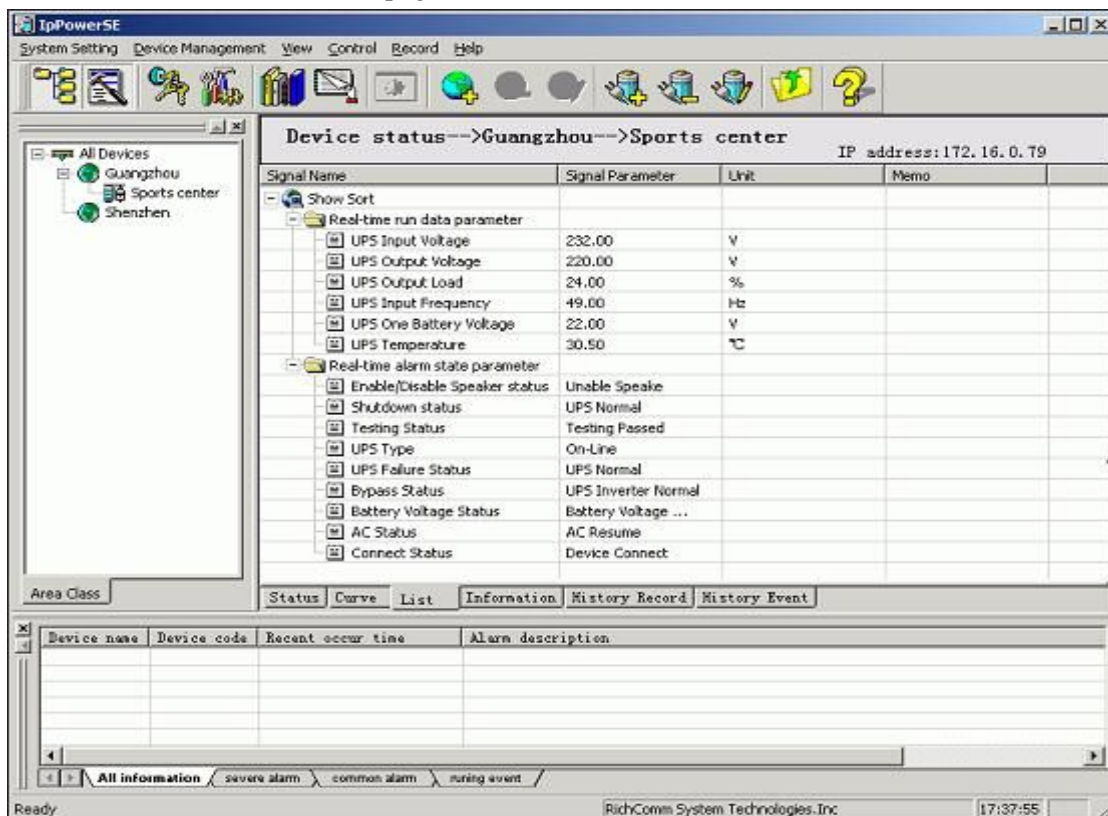
After adding device, user will be able to view page as below:



Choose a device in the navigator and press the right button of mouse, and then choose “Device Status” and Main Window will display status graph of the current device, as below:



There are five different device pages in the Main Window:



IpPowerSE

System Setting Device Management View Control Record Help

Device status-->Guangzhou-->Sports center IP address: 172.16.0.79

Manufacturer Information

Manufacturer: richcomm
Version: Version1.0
Model: UPS 5K-11A

Device information

Name: Sports center Code: 79
Locus: Guangzhou Types: single-phase U
IP address: 172.16.0.79 Verify code: RICHCOM
Interval for saving the history data: 10 minut Request data Every 20 secs
Remaining time for discharge less than 20 % Battery maintenance 2 hour
Dispark: yes COM PORT COM: T001
MAC address: 00-AA-5A-80-00-79
Remark:

Rateding Information

Voltage: 220.0 V
Current: 100 A
Battery voltage: 02.55 V
Frequency: 50.0 Hz

Area Class

Status Curve List Information History Record History Event

Device name	Device code	Recent occur time	Alarm description

All information severe alarm common alarm running event

Ready RichComm System Technologies, Inc. 17:38:29

IpPowerSE

System Setting Device Management View Control Record Help

History Event-->Guangzhou-->Sports center
Show all the records for the device (Current 1/1 Page 1 records in total)

Start: 2005-10-25 End: 2005-11-4 Gradin All Level Type: All Event Filter...

Device name	Event name	Event ...	Alarm time	Confir...	Confir...	Co
Sports ce...	Connection Password Error	running...	2005-11-4 17:25:45	N		

Area Class

Status Curve List Information History Record History Event

Device name	Device code	Recent occur time	Alarm description

All information severe alarm common alarm running event

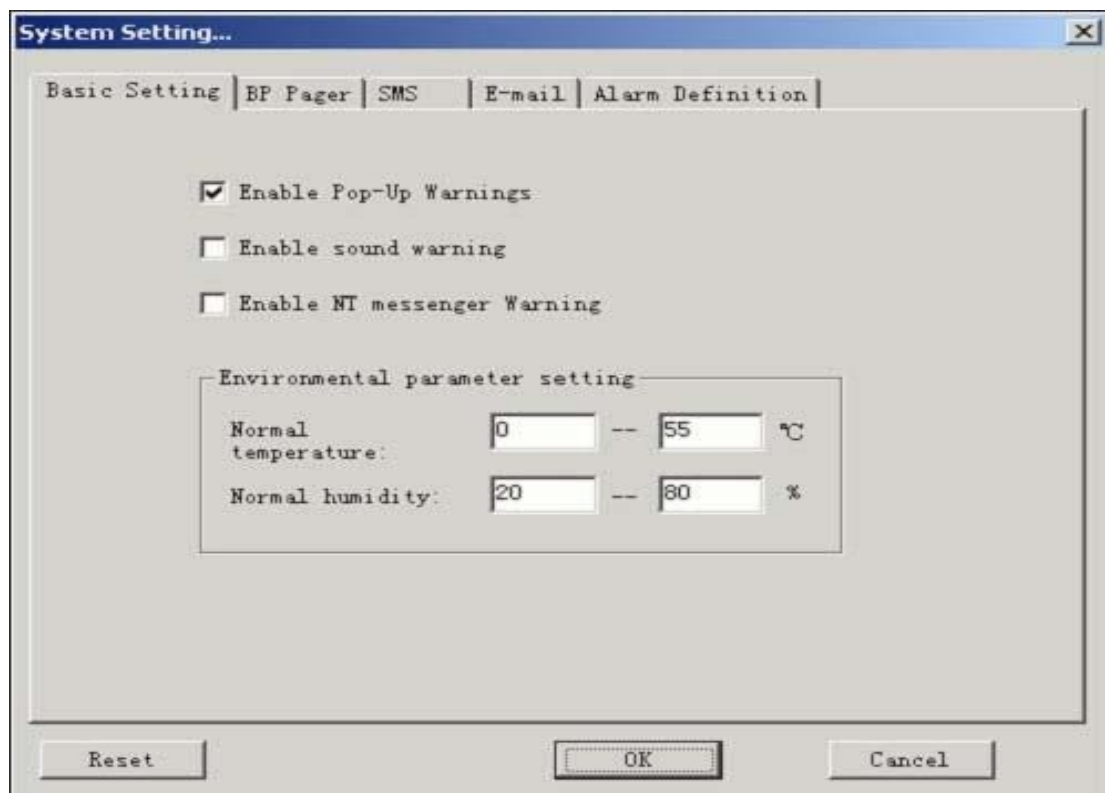
Ready RichComm System Technologies, Inc. 17:39:48

5. “System Setting” Menu

5.1 System Setting

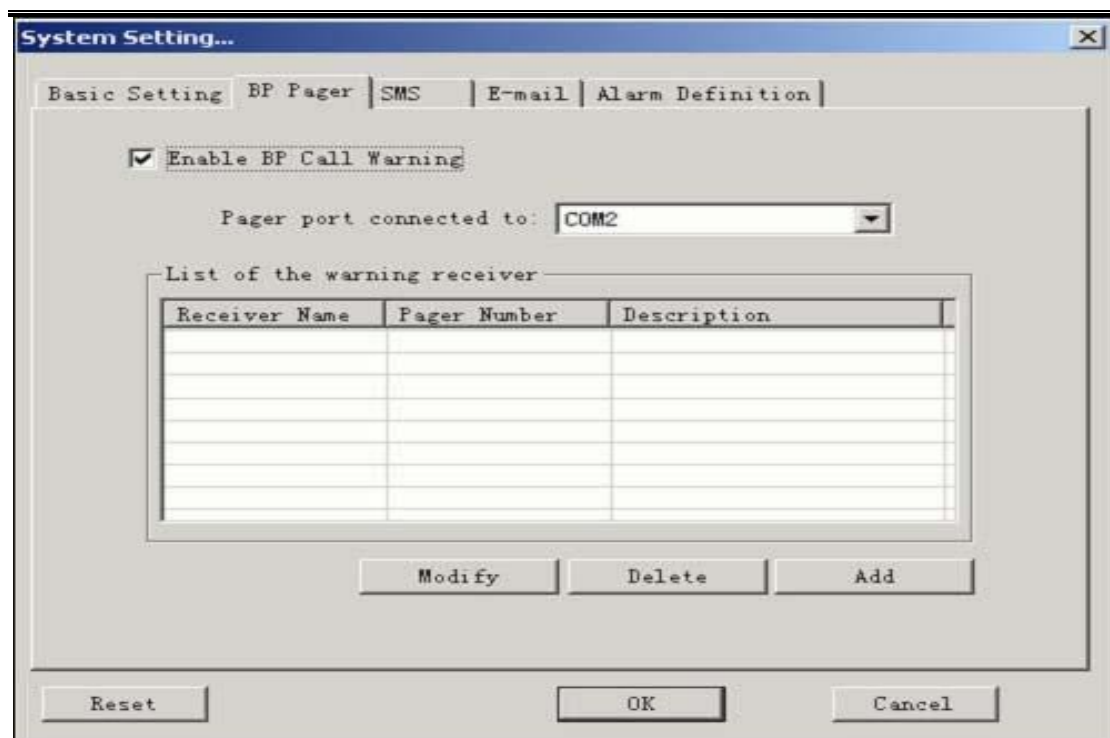
5.1.1 Basic Setting.

It defaults to activate the “pop-out” warning, voice warning and messenger warning. An external sound box is required for the voice warning. “Environment parameter setting” is valve value for temperature and humidity warning of device. When temperature and humidity module detect the value over the setting range, IP Power SE will send a warning.

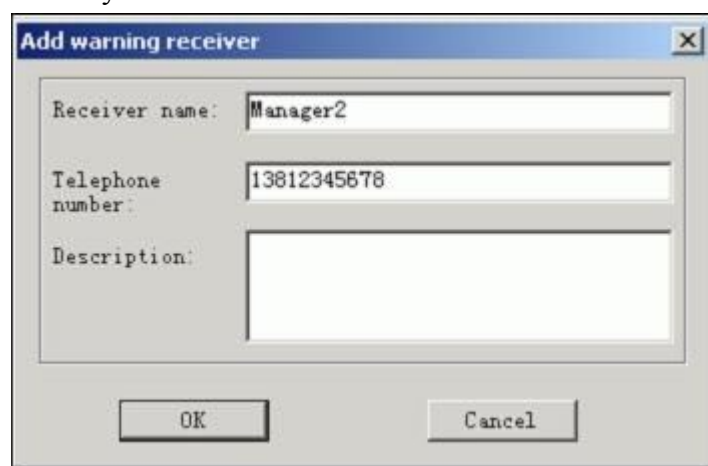


5.1.2 Beep Pager

It defaults to be shut down. If users want to use BP warning function, please select this function. If not, please do not activate this function to occupy serial port to affect other ports' function. Beep Pager can be directly inserted into the serial port of the computer without installing the drive program.



To add the BP Warning Receiver, please press the “Add” button shown on the above page, input the Receiver name and BP number. After adding, users can choose to “Modify” or “Delete” the added receivers.



5.1.3 SMS

SMS Warning uses GSM Modem. To select this function please activate it. Select “Input Modem serial port” for the connecting port. Baud Rate depends on the specific setting in the Modem which should be 9600 generally.

SMS center number will be variable depends on the area. If user uses SIM card of China Mobile, the center number will be +8613800200500. For more specific information please inquire the local mobile server.

System Setting...

Basic Setting | BP Pager | **SMS** | E-mail | Alarm Definition

☒ Enable SMS warning

Send SMS by GSM Modem:

GSM MODEM connected to: COM3

Baud Rate: 9600

SMS Center: +8613800200500

List of the warning receiver

Receiver Name	Telephone N...	Description

Modify Delete Add

Reset OK Cancel

SMS warning function supports multi-receiver. It supports mobile receiving signal of China Mobile, China Unicom and China Telecom.

System Setting...

Basic Setting | BP Pager | **SMS** | E-mail | Alarm Definition

☒ Enable SMS warning

Send SMS by GSM Modem:

GSM MODEM connected to: COM3

Baud Rate: 9600

SMS Center: +8613800200500

List of the warning receiver

Receiver Name	Telephone N...	Description
Manager2	13812345678	
Manager3	13312345678	
Manager3	02088123456	

Modify Delete Add

Reset OK Cancel

5.1.4 Email

Activate the Email warning function for using Email. For SMTP address you can input IP address or domain name, sender's address, user name and password. For example SMTP address: smtp.richcomm.com

Sender's address: server@richcomm.com

User name: server

Password: *****

The screenshot shows the 'System Setting...' dialog box with the 'E-mail' tab selected. The 'Enable E-mail warning' checkbox is checked. The 'SMTP Server' field contains '172.16.0.1'. The 'SMTP Authentication' checkbox is unchecked. The 'Send Email Address' field is empty. The 'User Name' and 'Password' fields are also empty. Below these fields is a table titled 'List of the warning receiver' with columns 'Receiver Name', 'E-mail address', and 'Description'. The table is currently empty. At the bottom of the dialog are buttons for 'Reset', 'OK', and 'Cancel'.

Receiver Name	E-mail address	Description
---------------	----------------	-------------

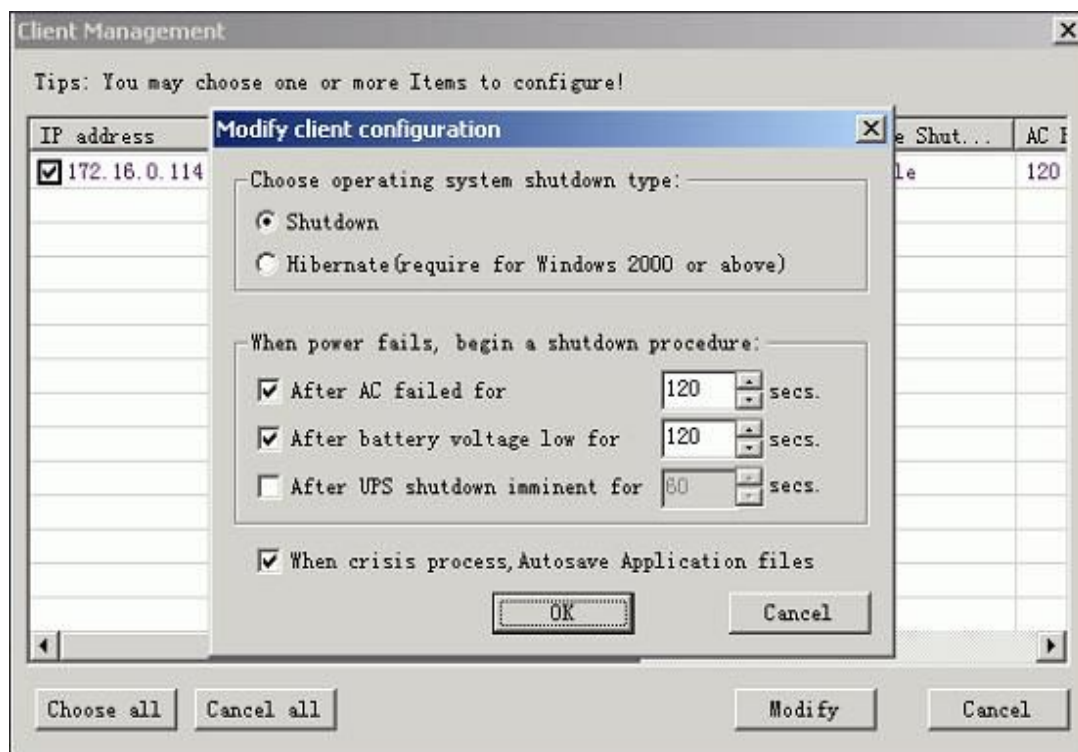
5.1.5 Warning Definition

Warning definition is used for defining the warning level, warning voice broadcasting setting, etc.

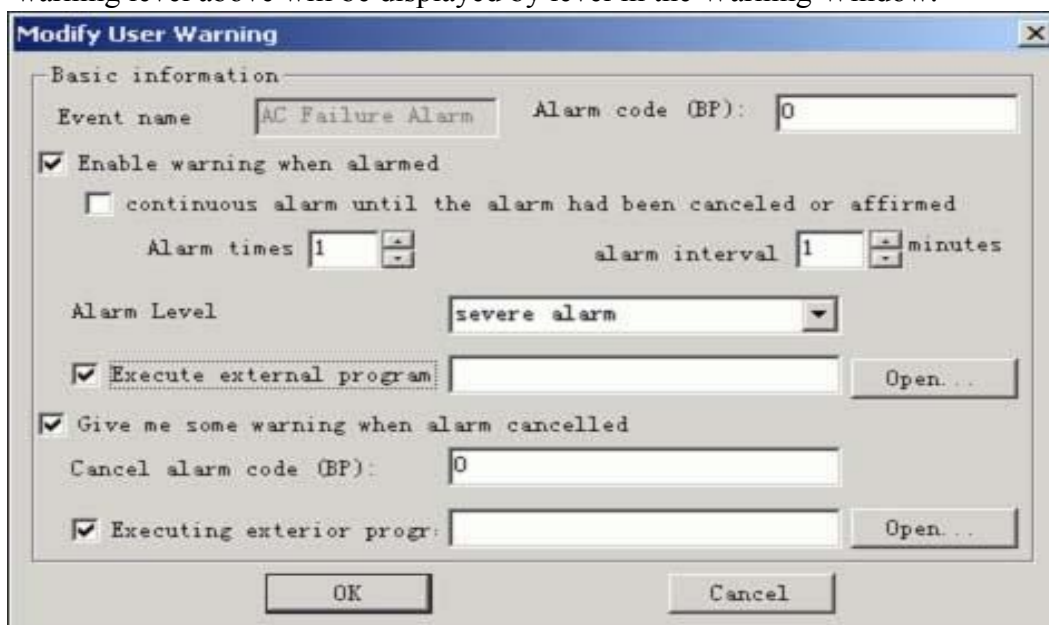
The screenshot shows the 'System Setting...' dialog box with the 'Alarm Definition' tab selected. The 'Device types' dropdown menu is set to 'single-phase UPS'. Below this is a table titled 'List of Warning' with columns 'Event name', 'Alarm times', 'Interval', and 'Alarm Level'. The table contains several rows of warning events, all with 'Alarm times' and 'Interval' set to '1'. The 'Alarm Level' column shows 'severe alarm' for 'Turn Off Alarm', 'AC Failure Alarm', and 'Battery Voltage Low', and 'runing event' for the others. A 'Modify' button is located at the bottom right of the table. At the bottom of the dialog are buttons for 'Reset', 'OK', and 'Cancel'.

Event name	Alarm times	Interval	Alarm Level
<input checked="" type="checkbox"/> Turn Off Alarm	1	1	severe alarm
<input checked="" type="checkbox"/> Testing In Progress	1	1	runing event
<input checked="" type="checkbox"/> UPS Failure Alarm	1	1	common alarm
<input checked="" type="checkbox"/> UPS Bypass	1	1	common alarm
<input checked="" type="checkbox"/> Battery Voltage Low	1	1	severe alarm
<input checked="" type="checkbox"/> AC Failure Alarm	1	1	severe alarm
<input checked="" type="checkbox"/> UPS Disconnect	1	1	common alarm
<input checked="" type="checkbox"/> Network Interruption	1	1	runing event
<input checked="" type="checkbox"/> Connection Passwo...	1	1	runing event
<input checked="" type="checkbox"/> Control defeat	1	1	runing event
<input checked="" type="checkbox"/> NetMate type unma	1	1	runing event

Double press the Warning Information to be modified. If an alarm needs to be continuously broadcasted without the confirmation of the administrator, you can choose the option “warning till it’s cancelled or confirmed” and set the interval time for voice broadcasting. You also can customize the warning level, set computer to carry out external program when an alarm occurred or cancelled.



Warning confirmation is set in the “History Event” page in the device. If the warning is not cancelled or confirmed, you can confirm it by double press the button. The warning level above will be displayed by level in the Warning Window.



5.2 Crisis Processing

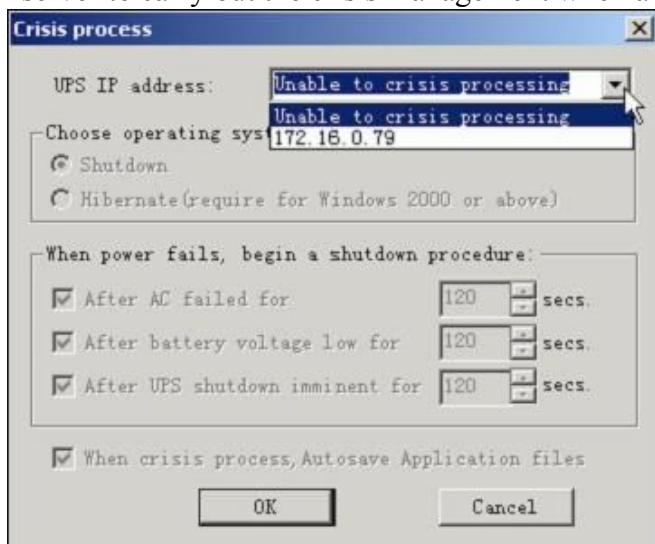
5.2.1 Client Crisis Processing

Client crisis processing is for managing the computer which has installed IP Power SE software. After the client computer has installed IP Power SE Client software and authorized management for server, page will be displayed after opening “client crisis processing” option.

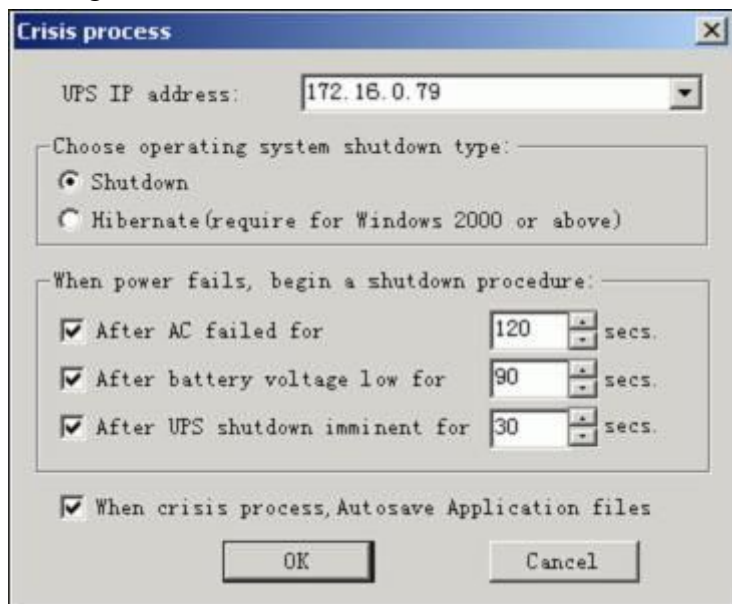
If there is more than one computer you can choose one of them and press “modify”. The setting is for configuring the management in client side, but not for the same computer you are making the setting.

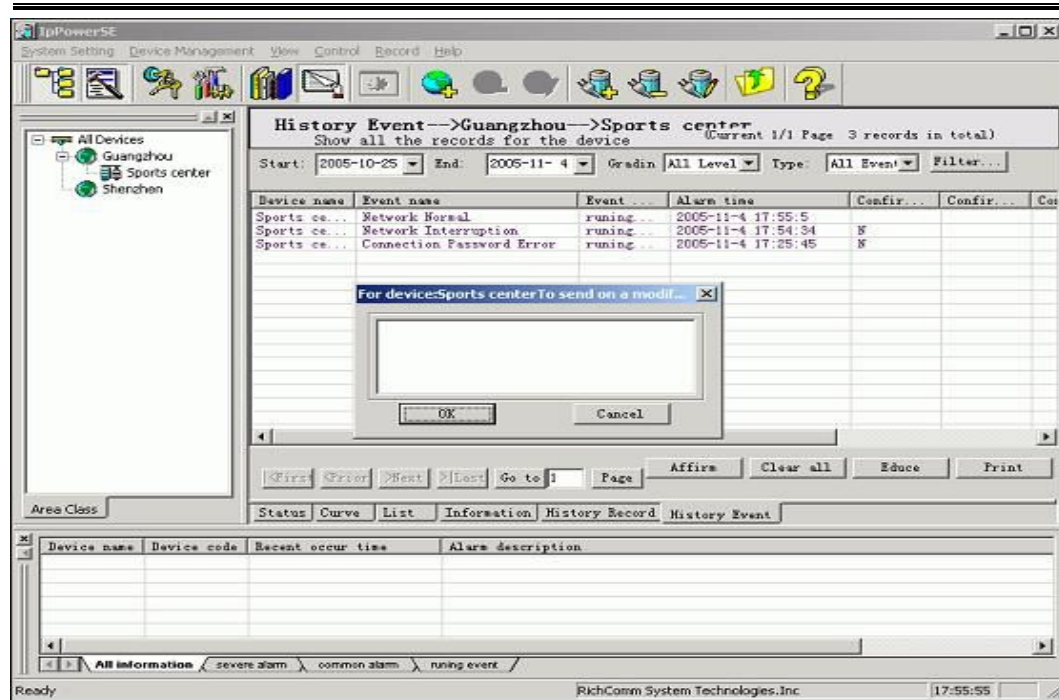
5.2.2 Server Crisis Processing

Open the “Server crisis processing” to select a certain UPS in the network to order the server to carry out the crisis management when alarming.



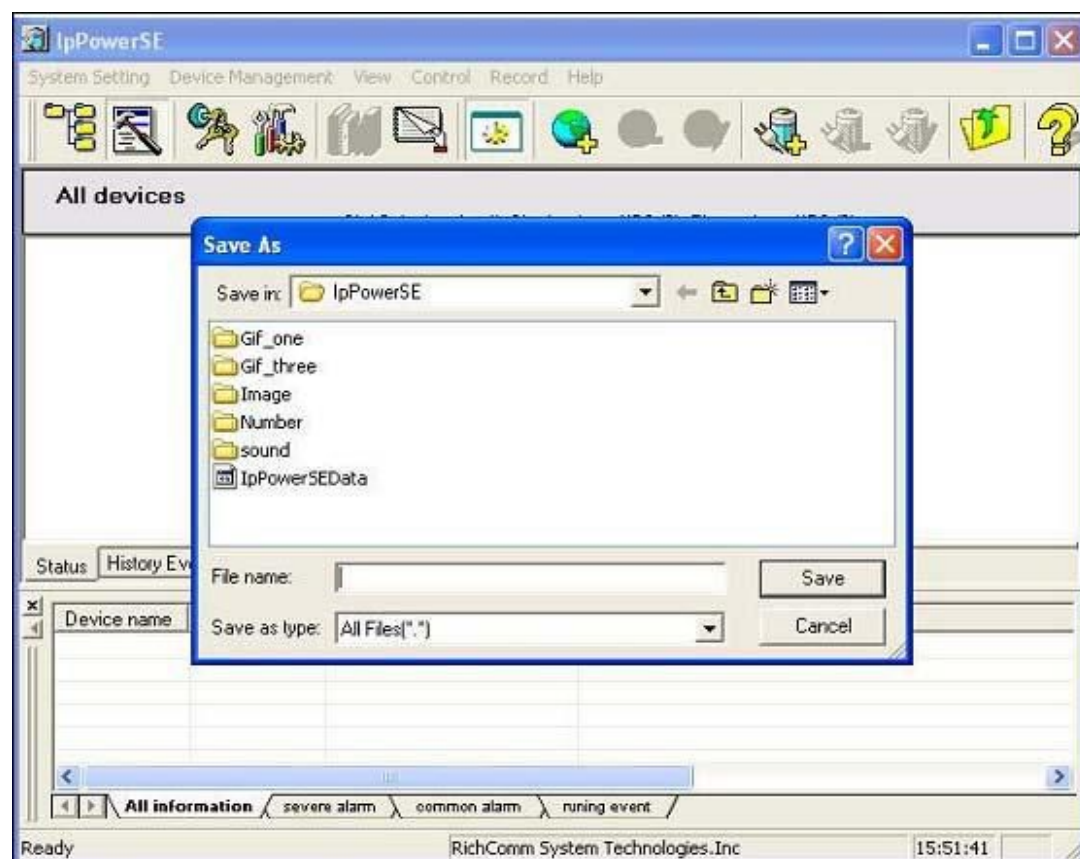
After selecting the IP address (SNMP card's IP address), you can set the crisis management for the server.





5.3 Data Backup

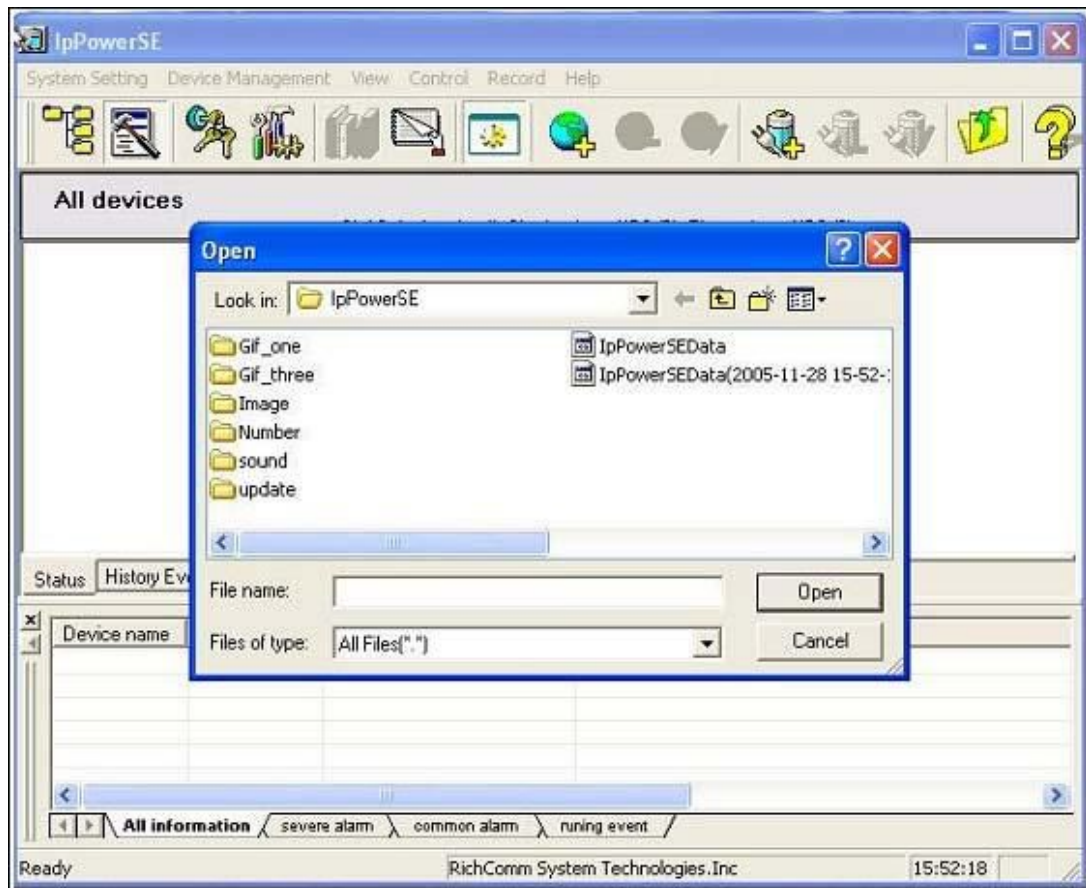
IP Power SE supports the data backup function. Users can easily backup their present database (devices, history events, history data, logs) and save as ACCESS database table. It's easy for modifying, transferring and printing the data.



5.4 Recover Data

System will confirm your exit when you choose the exit option. IP Power SE has the data recover function which avoid the risk of the customer's incorrect operation to the database and any unexpected destroy to the database. Import data should be backup database. After importing, database in use will auto insert time format and backup after renamed.

Notice: when the import database is too big, IP Power SE will need more time to recover running. Please wait for the running.



5.5 Log out

After logging out the system will resume to the initial status when logging in.

5.6 Modify Password.

Modify the administrator login password.

5.7 Exit

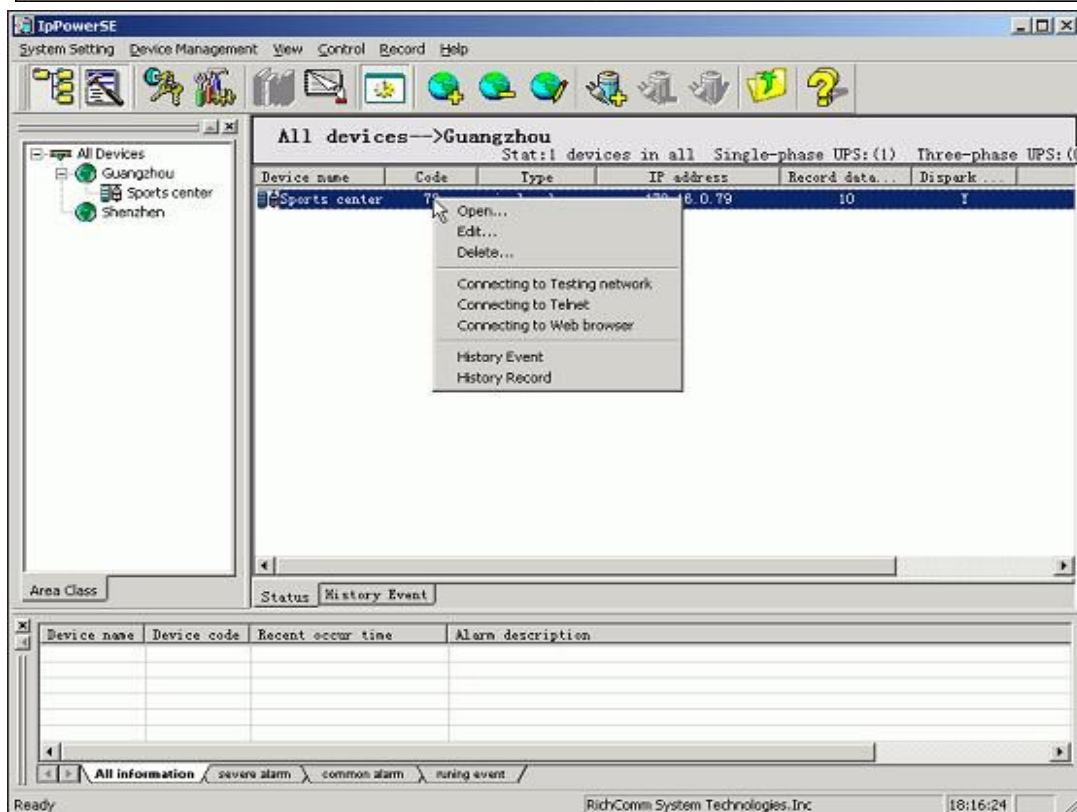
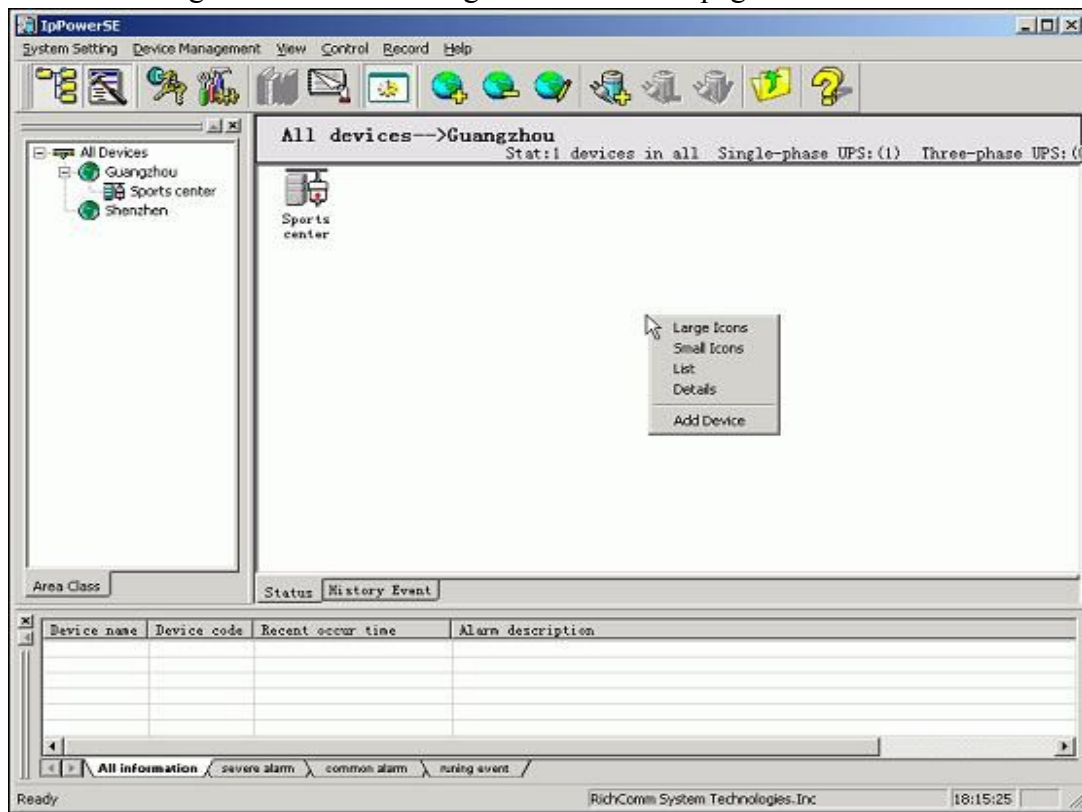
6. “Device Management” Menu

Device management function is for adding, modifying, deleting area and device. After installing IP Power SE for the first time you can choose whether to add an area or device by “Device Management” menu or use the shortcut button in the toolbar.

In the Area Status, Main Window displays the status of all the devices in the area.

Press the right button of mouse in the blank of window and choose to show the status of the devices in the area. Choose “Detailed information” to check the detailed information of all the devices.

IP Power SE supports prompt view, login and modify device in Area Status. Choose the device and press the right button of mouse. Menu will be displayed. Then you can choose to open and view the device status, edit and delete device, configure device IP and distant login SNMP card through Telnet and webpage.



7. “View” Menu

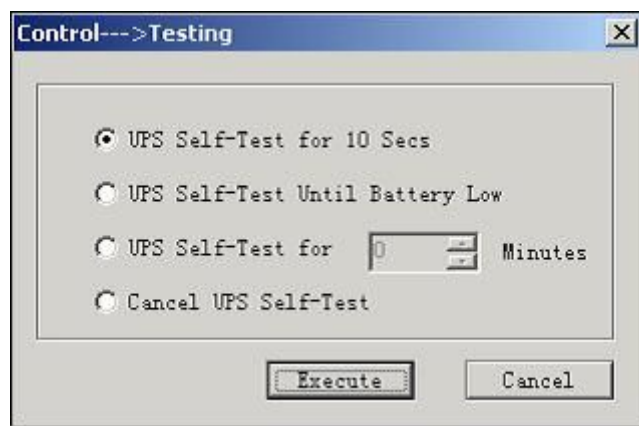
View Menu is for configuring display status and device status such as setting whether to show the toolbar, status bar, navigator bar and information bar on UI, or to view the device status chart, graph, list and attribute.

8. “Control” Menu

For the device that has set the control, you can only control the monitored device after you set the IP Power user authority in the SNMP card and have the control right.

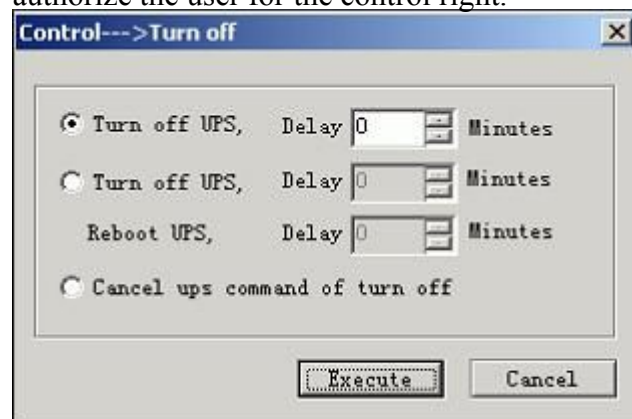
8.1 Control/Test.

Used for UPS self-test and canceling the test.



8.2 Turn on/Turn off

Used for turning on and turning off the UPS. You also need to set in SNMP card and authorize the user for the control right.

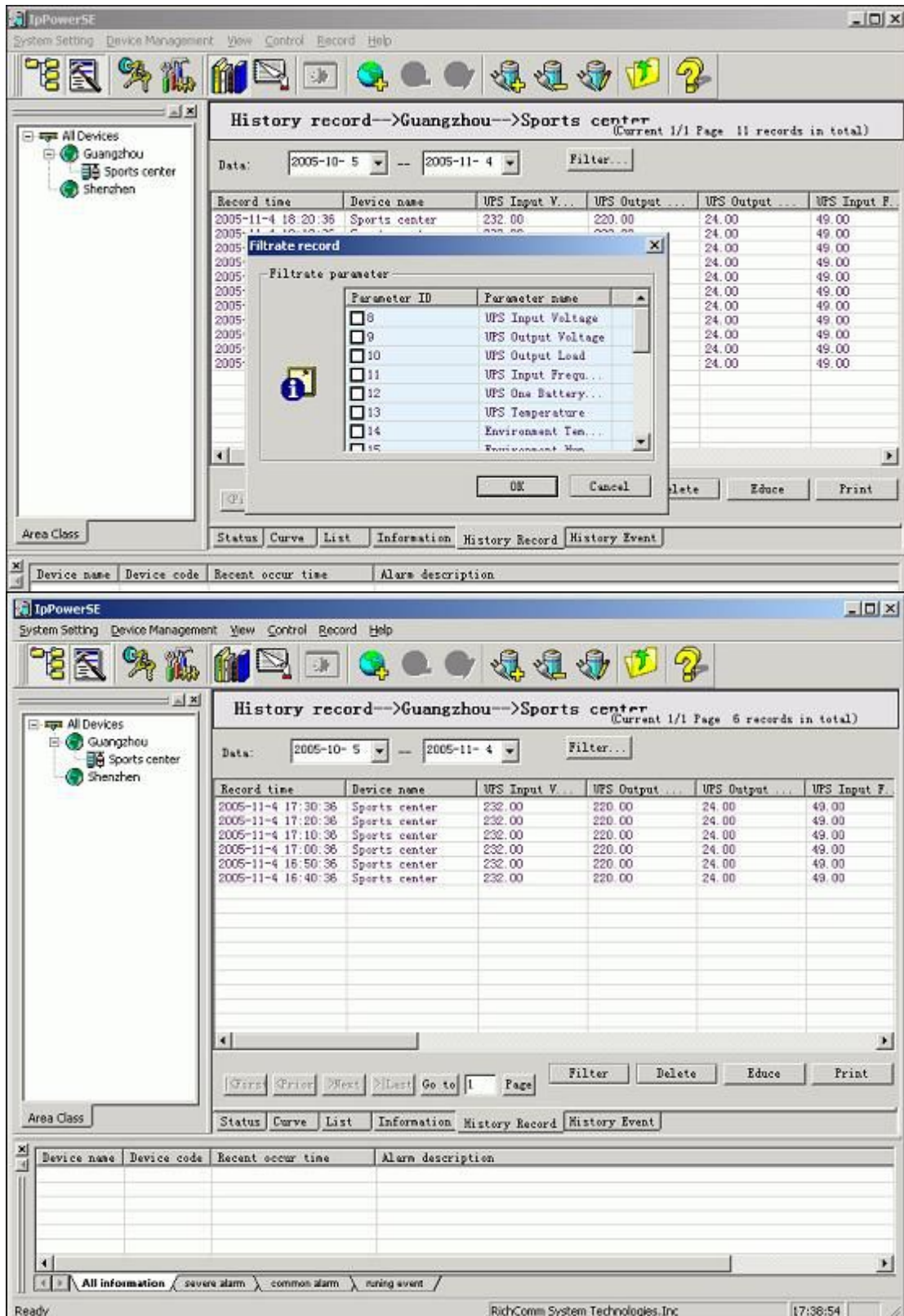


9. “Record” Menu

9.1 Check the history data, select the checking device and press “Record” and “History Data”. User also can select single device and press “History Data” with the right button on the mouse. History data for the whole area can’t be checked at one time owing to the large data record.

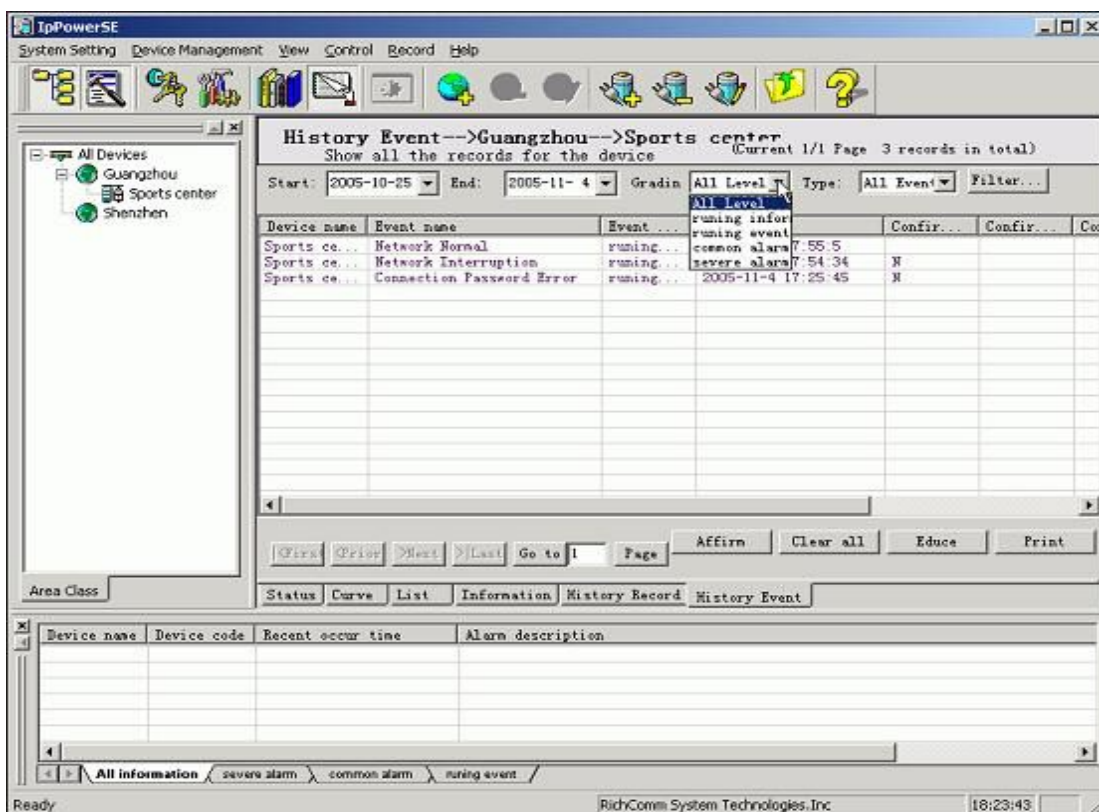
IP Power SE supports time filter and parameter filter to history data. User can inquire

IP Power SE supports export Excel table and print function, which is convenient for users to handle analysis and save record.

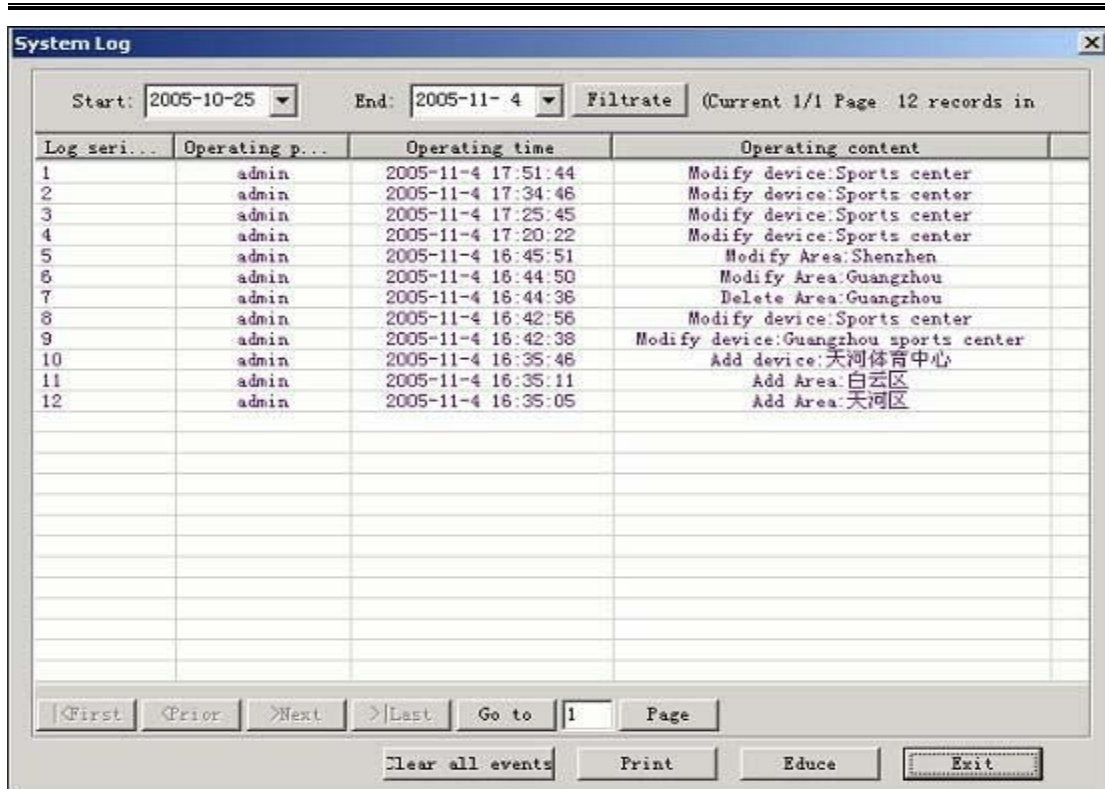


9.2 To check history event, user may select either the whole area, certain area or certain device and press “View” or “History Event” in the menu. It can be also checked by pressing “History Event” in the area or device with right button on the mouse. Viewing filter conditions can be whether by time, alarm level or event type. When selecting to clear history event, all history event will be cleared and renew the record.

History event also supports import Excel table and print function, which is convenient for user to handle analysis and save record.



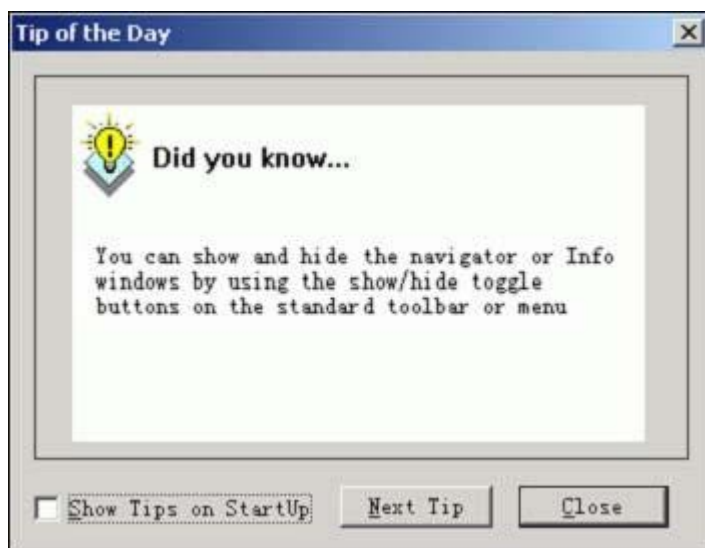
9.3 View system log. Users can view the user operation when logging in the monitoring system. It offers inquiry filter, information export in Excel and print functions.



10. “Help” Menu

10.1 “About IP Power SE” is for viewing the manufacturer information and version.

10.2 “Help for today” is for offering some helps and hints for users’ operation. It defaults to pop-up after the first installation and can be neglected by deleting “display help when started” and log in system directly.



10.3 “System Help”, please enter the Help file for more information.